

DINTEK DuraMAX Din-Rail Mounting Kit - With End Caps

DINTEK's DuraMAX™ DIN rail mount RJ45 jack housing kit is the perfect solution for presenting a shielded or unshielded RJ45 jack in an enclosed cabinet or industrial networking installation where DIN rail mounting capabilities are available.

Designed for standard 35mm width DIN rails, and containing grounding springs, the DuraMAX DIN-rail housing kit is your go-to solution for industrial ethernet applications.

Features

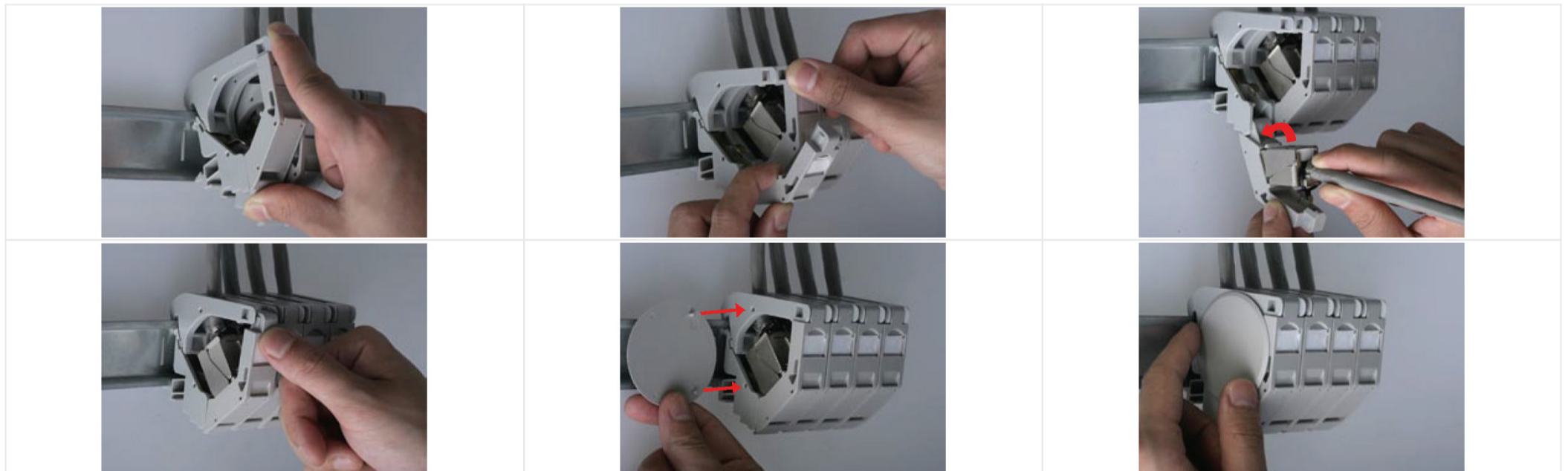
- Compatible with DINTEK Cat.5e, Cat.6 & Cat.6A ezi-JACKS
- For shielded & unshielded RJ45 Jacks
- Side-by-side mountable
- Grounding spring to ensure shielded environment
- For use with standard 35mm width DIN rails
- End caps for enclosing single housing kit or each end of a row



Standards Conformance

- DIN-Rail TH35 acc. to DIN EN60715
- DIN 43880

* NOTE: RJ45 Jacks sold separately



Ordering Information

Product Number	Product Name
1303-01001	DINTEK DuraMAX Din-Rail Mounting Kit - Without End Caps
1303-01002	DINTEK DuraMAX Din-Rail Mounting Kit - With End Caps

DINTEK Electronic Limited

台北市中山區中山北路二段96號 嘉新第二大樓五樓N511
 N511, 5F, 2nd Bldg, No. 96, Sec. 2, Zhongshan N. Rd. Zhongshan Dist., Taipei City 10449, Taiwan
 P: +886-2-25223138 E-mail: sales@dintek.com.tw W: www.dintek.com.tw