

# Supplement Light AI LPR Motorized Pro Bullet Plus Network Camera

Supplement Light

Motorized Lens



DATASHEET

## KEY FEATURES

- ▶ 140dB Super WDR (Excellent performance even when the ratio of the luminosity of brightest and darkest is up to 140dB.)
- ▶ HLC (High Light Compensation. Improving image visibility under strong light sources.)
- ▶ P-Iris (Giving you a more clear scene with depth of view.)
- ▶ Defog (Defog technology. Restoring clear images in hazy and foggy weather.)
- ▶ Versatile Interfaces (Complete interface design including Wiegand interface, Alarm I/O, Audio I/O, DC 12V and PoE is available)
- ▶ 256G (Supporting ultra-large external microSD/SDHC/SDXC card storage up to 256G.)
- ▶ Smart Stream (Bandwidth, storage and bit rate are saved with Smart Stream On, eg, H.265+ saves 70%~80% bandwidth that of H.264.)

## Clear Capture of Dynamic License Plates

Capturing high-accurate license plates of fast moving vehicles is always of the top concern in traffic monitoring. Equipped with 1/2.8" Starlight Sensor, 60fps frame rate, high-quality deblur and the superior image processing algorithms, the AI LPR cameras achieve excellent capture performance at high speed and accuracy.



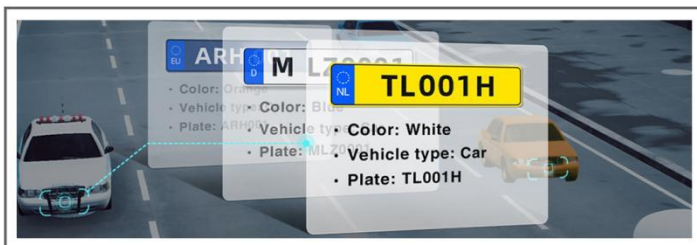
## Superior Image Quality for 24/7 Traffic Monitoring

With supplement light of IR LED Light or White LED Light integrated, the AI LPR cameras deliver superior image performance and higher accuracy recognition results especially in low-light conditions. And the supplement light could turn on/off automatically, achieving a flexible way for the monitoring control.



## AI-powered LPR Algorithm

Based on AI algorithm, the LPR function provides value-added data via a pre-trained deep learning model, which can not only recognize vehicle plates in real time with high accuracy, but also identify more vehicle features, like vehicle type, color, etc., generating powerful security and traffic insights.



## Wiegand Protocol Supported

The Supplement Light AI LPR Camera can work with any access control system perfectly with built-in Wiegand interface, greatly expanding its usability to a wider range of application scenes.

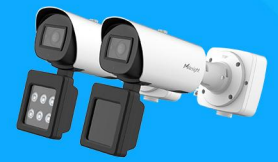


# Supplement Light AI LPR Motorized Pro Bullet Plus Network Camera



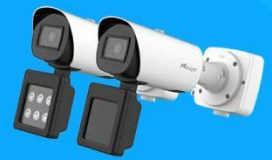
|             | Model                                   | MS-C2966-RF(I)LWPC<br>(2MP)  |
|-------------|---|--|
| Camera      | Image Sensor                            | 1/2.8" Progressive Scan CMOS   |
|             | Min. Illumination                       | Color: 0.005Lux@F1.4<br>B/W: 0Lux with IR on   |
|             | WDR                                     | 140dB Super WDR  |
|             | Shutter Time                            | 1/100000s~1s   |
|             | Day/Night Mode                          | Day/Night/Auto/Customize/Schedule  |
|             | S/N                                     | >55dB  |
| Lens        | Lens                                    | Motorized 2.7~13.5mm@F1.4<br>P-Iris(Optional)  |
|             | Field of View                           | H113°~H33°/D130°~D38°/V60°~V18°  |
|             | Mount                                   | Φ14  |
|             | Focus Control                           | Auto/Manual  |
|             | Iris Control<br>(Optional for I Series) | Auto/Manual  |
| LPR         | Max. Vehicle Speed                      | 200km/h  |
|             | Recognition Accuracy                    | >95%   |
|             | Coverage                                | Support simultaneous detection of 4 regions  |
|             | White/Black List                        | Up to 1000 records inside the camera   |
|             | Smart Traffic Detection                 | License Plate Recognition, Plate Type Classification, Plate Color Recognition,<br>Vehicle Type Classification, Vehicle Color Recognition   |
| Illuminator | Supplement Light                        | IR LED Light or White LED Light  |
|             | Light Bead                              | 9 (For IR LED Light)/6 (For White LED Light)   |
|             | Illumination Distance                   | Up to 20m  |
|             | Light Control                           | Auto/Always On/Off/Customize   |
| Video       | Max. Image Resolution                   | 1920x1080  |
|             | Primary Stream                          | 60Hz: 60fps@(1920x1080, 1280x960, 1280x720, 704x576)<br>50Hz: 50fps@(1920x1080, 1280x960, 1280x720, 704x576)   |
|             | Secondary Stream                        | 60Hz: 60fps@(704x576, 640x480, 640x360, 352x288, 320x240, 320x192, 320x180)<br>50Hz: 50fps@(704x576, 640x480, 640x360, 352x288, 320x240, 320x192, 320x180)                         |
|             | Tertiary Stream                         | 60Hz: 30fps@(1920x1080, 1280x720, 704x576, 640x480, 640x360, 320x240, 320x192, 320x180)<br>50Hz: 25fps@(1920x1080, 1280x720, 704x576, 640x480, 640x360, 320x240, 320x192, 320x180) |
|             | Video Compression                       | H.265*/H.265(HEVC)/H.264*/H.264/MJPEG  |
|             | Video Bit Rate                          | 16Kbps~16Mbps(CBR/VBR Adjustable)  |
|             | Privacy Masking                         | Up to 28 areas(24 mask areas and 4 mosaic areas)   |
|             | ROI                                     | Up to 8 areas  |
|             | Image Setting                           | Brightness/Contrast/Saturation/Sharpness   |

# Supplement Light AI LPR Motorized Pro Bullet Plus Network Camera

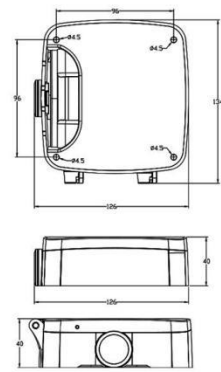
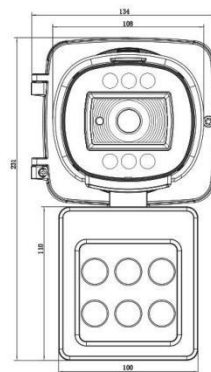
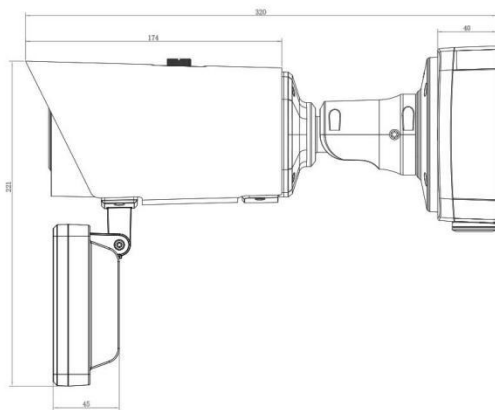
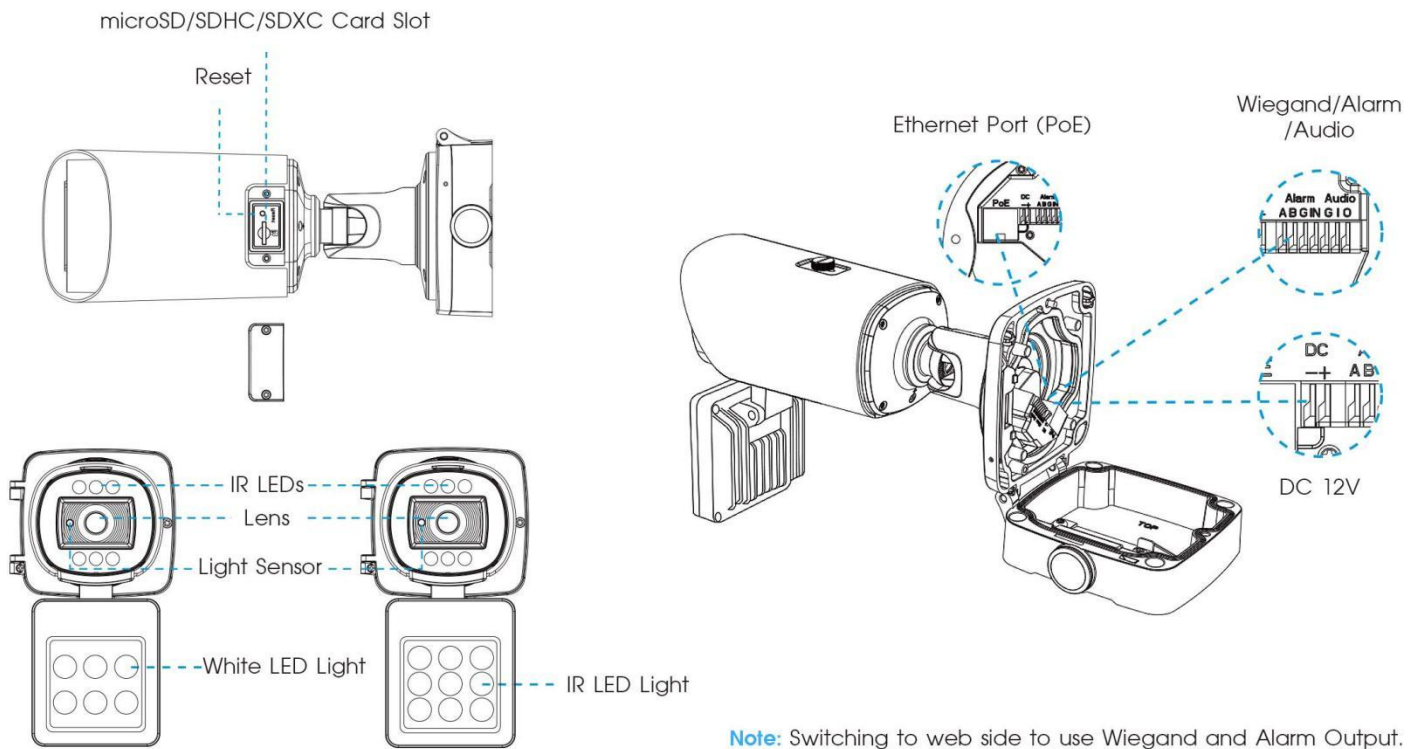


|                  |                      |  |
|------------------|----------------------|--|
| <b>Interface</b> | Ethernet             | 1*RJ45 10M/100M Ethernet Port  |
|                  | Audio I/O            | 1/1  |
|                  | Alarm I/O            | 1/1  |
|                  | Wiegand              | Standard Wiegand 26-bit  |
| <b>Network</b>   | Network Storage      | NAS(Support NFS, SMB/CIFS), ANR  |
|                  | Protocol             | IPv4/IPv6, ARP, TCP, UDP, RTCP, RTP, RTSP, RTMP, HTTP, HTTPS, DNS, DDNS, DHCP, FTP, NTP, SMTP, SNMP, UPnP, Bonjour, SIP, PPPoE, VLAN, 802.1x, QoS, IGMP, ICMP, SSL |
| <b>Audio</b>     | Audio Compression    | G.711/AAC/G.722/G.726  |
|                  | Audio Sampling Rate  | 8/16/32/44.1/48KHz   |
|                  | Audio Bit Rate       | 16~256kbps   |
|                  | Two-way Audio        | Support  |
| <b>System</b>    | Storage              | microSD/SDHC/SDXC Card Local Storage, up to 256G   |
|                  | Advanced Function    | BLC, HLC, 2D DNR, 3D DNR, Defog, AWB, EIS, IP Address Filtering, AGC, Anti-flicker, Corridor Mode, Deblur, Watermark   |
|                  | SIP/VoIP Support     | Yes, Voice & Video-over-IP   |
|                  | Event Trigger        | Black/White List, Motion Detection, Network Disconnection, External Input, Audio Alarm, etc.   |
|                  | Event Action         | FTP Upload, SMTP Upload, SD Card Record, External Output, SIP Phone, HTTP Notification, etc.   |
|                  | System Compatibility | ONVIF Profile G & Q & S & T, API   |
| <b>General</b>   | Working Temperature  | -40°C~60°C   |
|                  | Working Humidity     | 0~90%(Non-condensing)  |
|                  | Power Supply         | PoE (802.3at) / DC 12V±10%   |
|                  | Power Consumption    | 5W MAX<br>25W MAX (For IR LED Light)<br>25W MAX (For White LED Light)  |
|                  | Weather Proof        | Up to IP67-rated for Weather-resistant Performance   |
|                  | Housing              | Vandal-proof IK10-rated Metal Housing (Without Supplement Light)   |
|                  | Surge Protection     | 4KV  |
|                  | Weight               | 1630g<br>2075g (With Supplement Light)   |
|                  | Dimensions           | 320mmX134mmX126mm<br>320mmX134mmX231mm (With Supplement Light)   |
|                  | Warranty             | 3/5 Years  |

# Supplement Light AI LPR Motorized Pro Bullet Plus Network Camera



## Structure Diagrams



Units: mm

## Accessories Support

A62 Junction Box (Default)

Weight: 510g  
Dimensions: 134\*126\*40mm



A01 Pole Mount

Weight: 720g  
Dimensions: 170\*51.5\*152.6mm



A03 External Corner Bracket

Weight: 900g  
Dimensions: 170\*152.5\*76.3mm



**Milesight** | [www.milesight.com](http://www.milesight.com)

Contact Us: [sales@milesight.com](mailto:sales@milesight.com) [support@milesight.com](mailto:support@milesight.com)

Add: 220 NE 51st Street, Oakland Park, Florida 33334, USA  
Tel: +1-800-561-0485

Add: 925, Anyang SK V1 Center, LS-ro 116beon-gil, Dongan-gu, Anvang-si, Korea  
Tel: +82-31-990-7732

Add: Building C09, Software Park Phase III, Xiamen 361024, Fujian, China  
Tel: +86-592-5922772

